



**Kina**  
PETROLEUM LIMITED

PNG Company Number  
1-63551

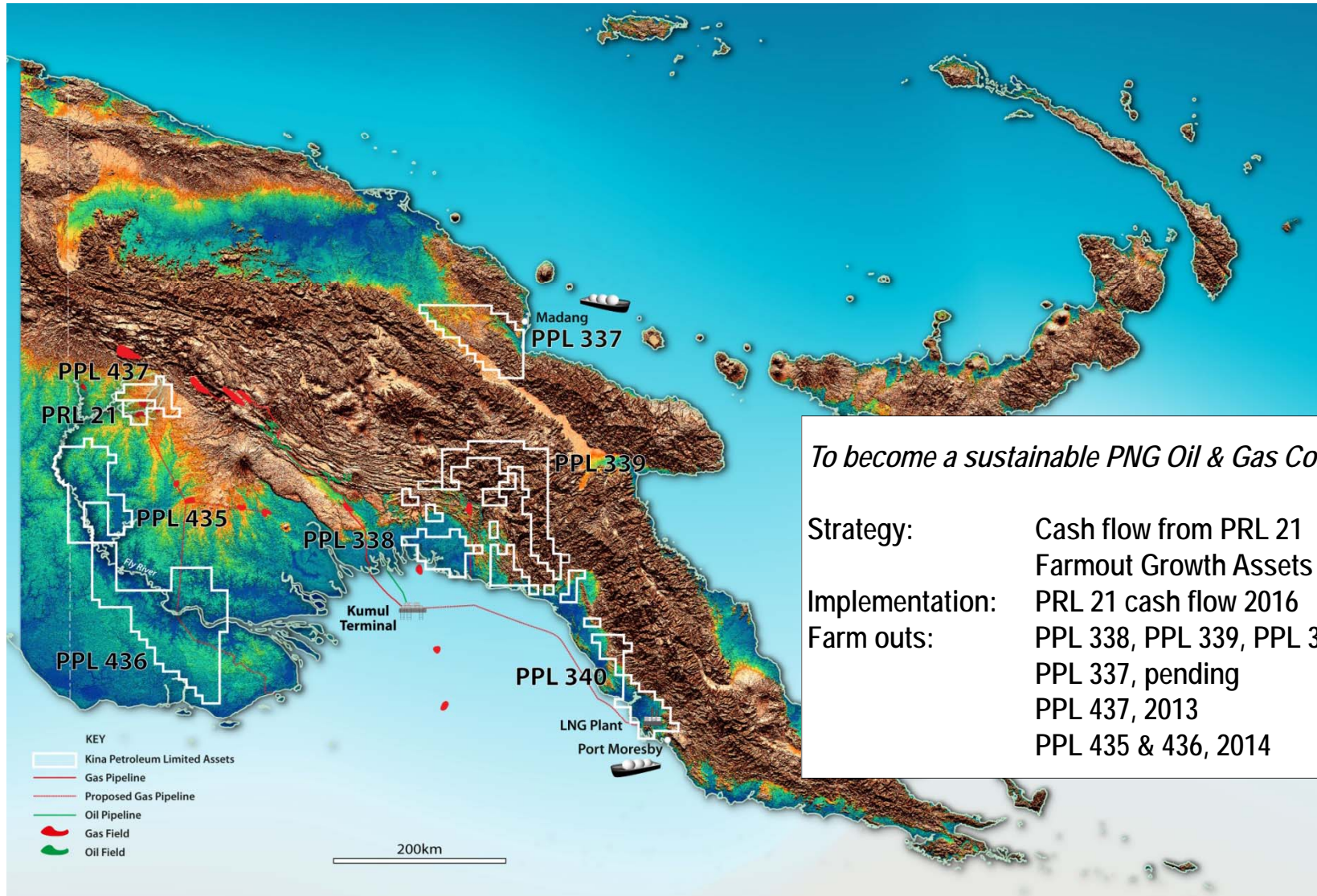
**BBY  
Papua New Guinea  
Energy Conference  
Material**

**October 2013**

**Private and Confidential**



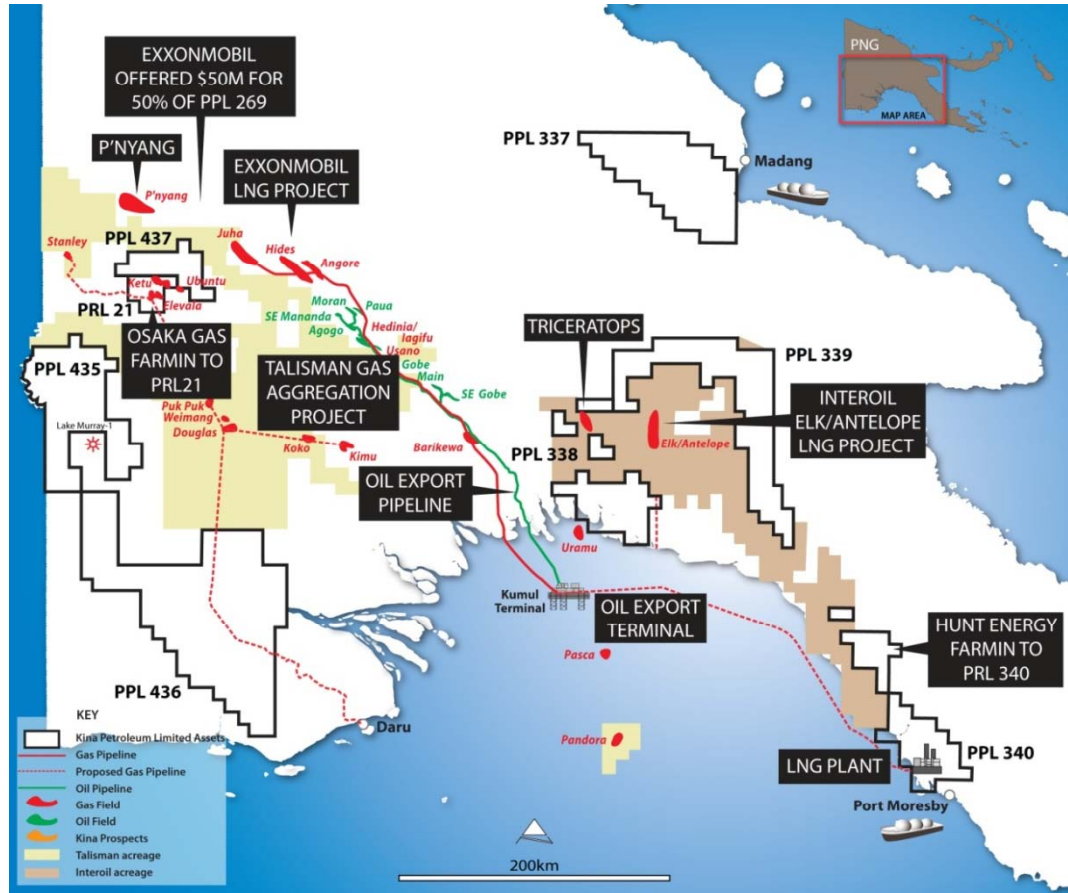




*To become a sustainable PNG Oil & Gas Company*

Strategy:	Cash flow from PRL 21 Farmout Growth Assets
Implementation:	PRL 21 cash flow 2016
Farm outs:	PPL 338, PPL 339, PPL 340 done PPL 337, pending PPL 437, 2013 PPL 435 & 436, 2014

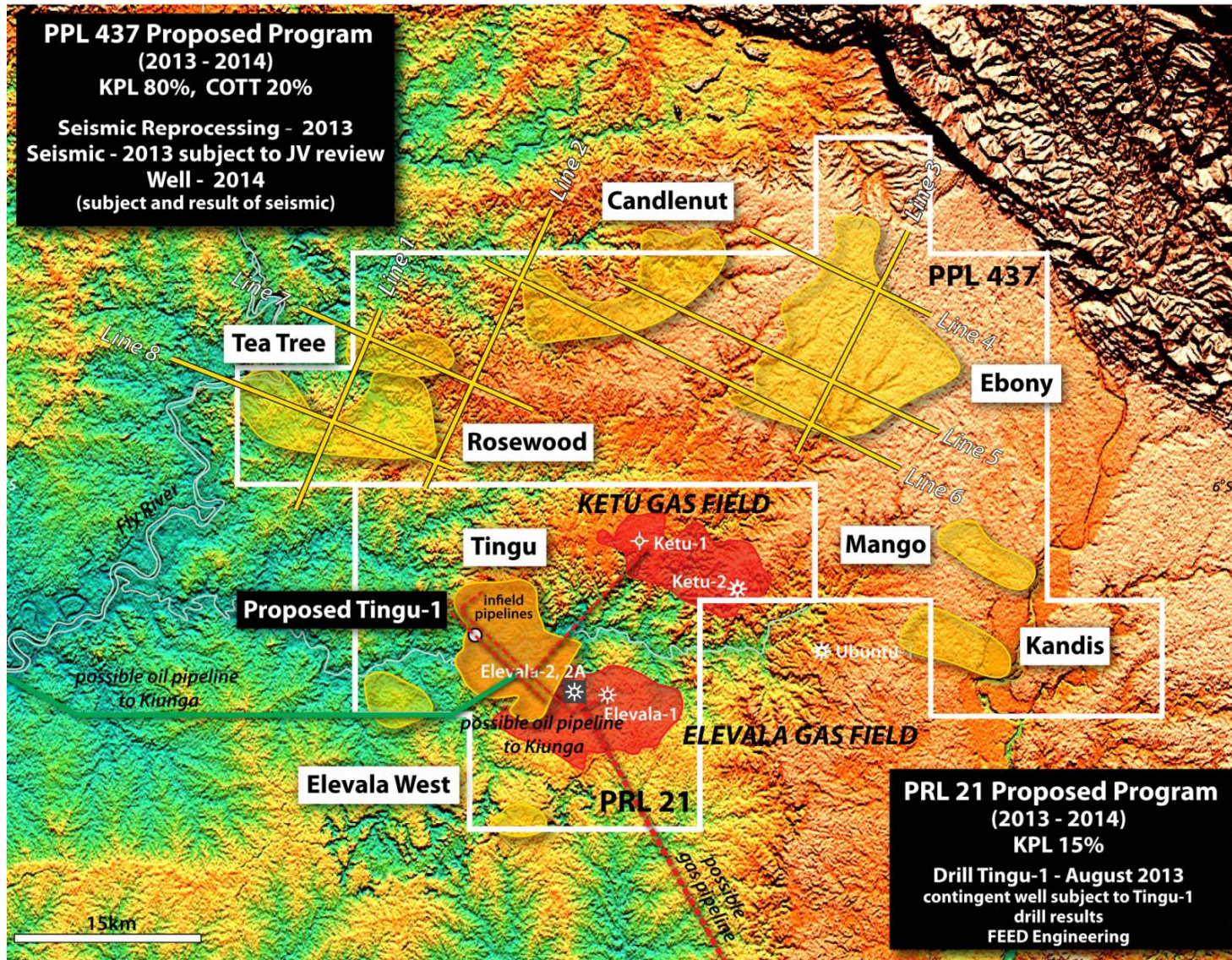




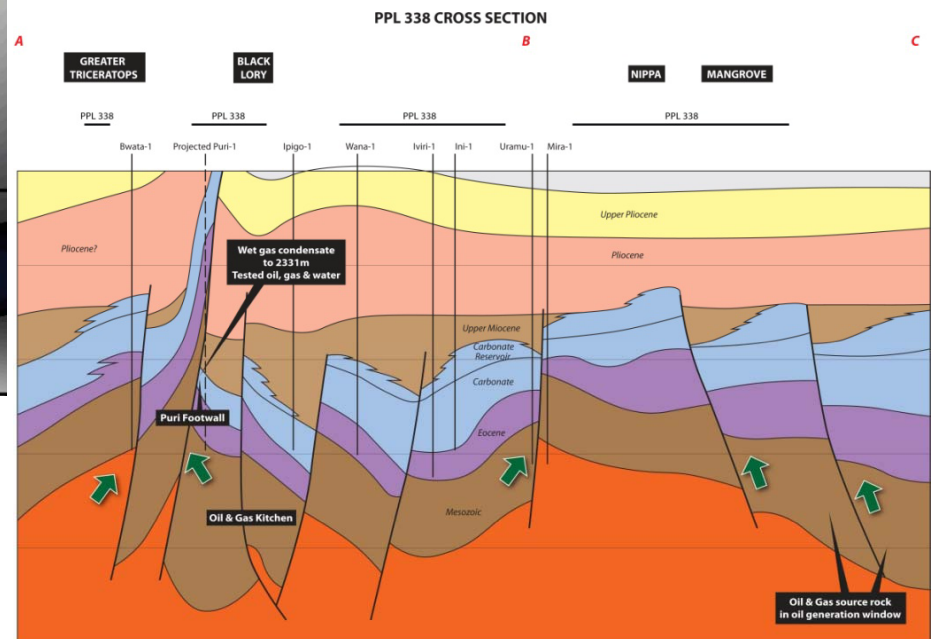
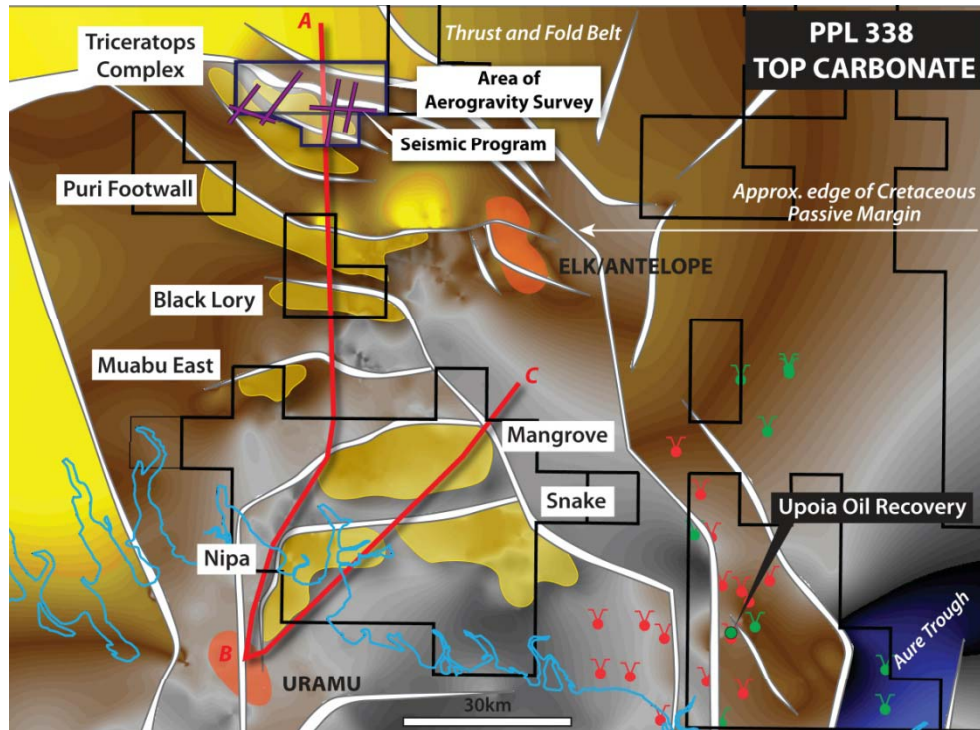
- Exxon operated PNG LNG Project on time
- Elk/Antelope and Triceratops opening up new plays in East Papuan basin.
- Triceratops seismic almost complete
- PRL 21 liquids project on track for PDL award and FID in 2014.
- Santos has farmed into PPLs 261 and 426.
- Osaka Gas has farmed in to PRL 21, along with PRL 4 and PPL 259.
- Exxon has offered \$40m for 50% of PPL 269.
- Hunt Energy and Minerals has farmed into PPL 340.





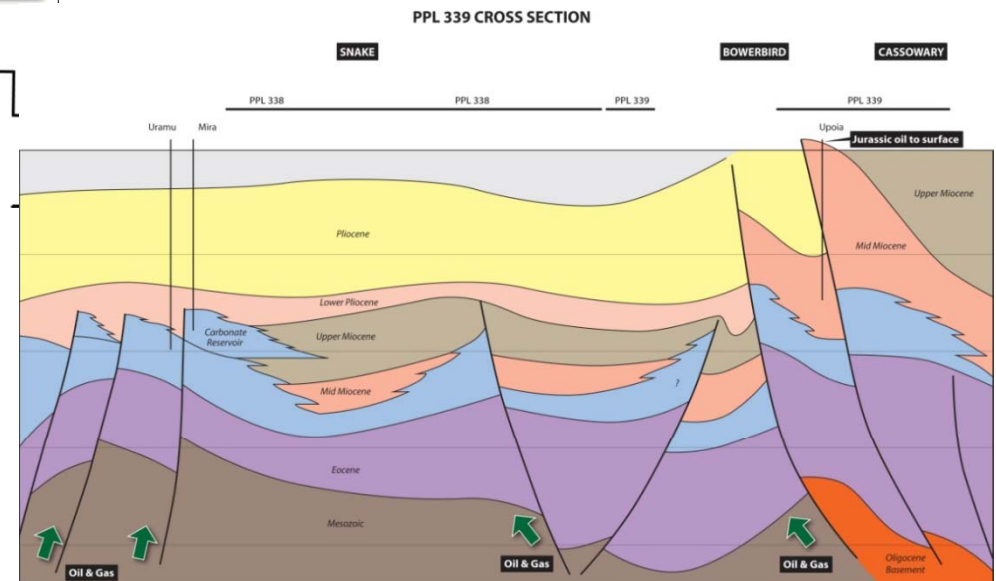
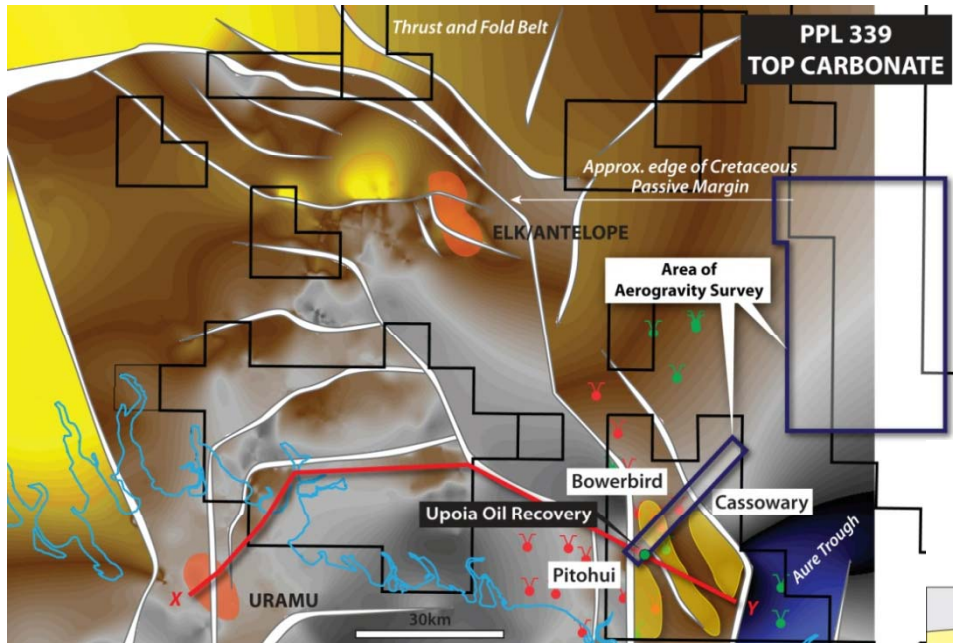






IMMEDIATE FOCUS TRICERATOPS  
PLENTY OF FOLLOWUP





**EXTENSION TO ELK/ANTELOPE  
AND TRICERATOPS**



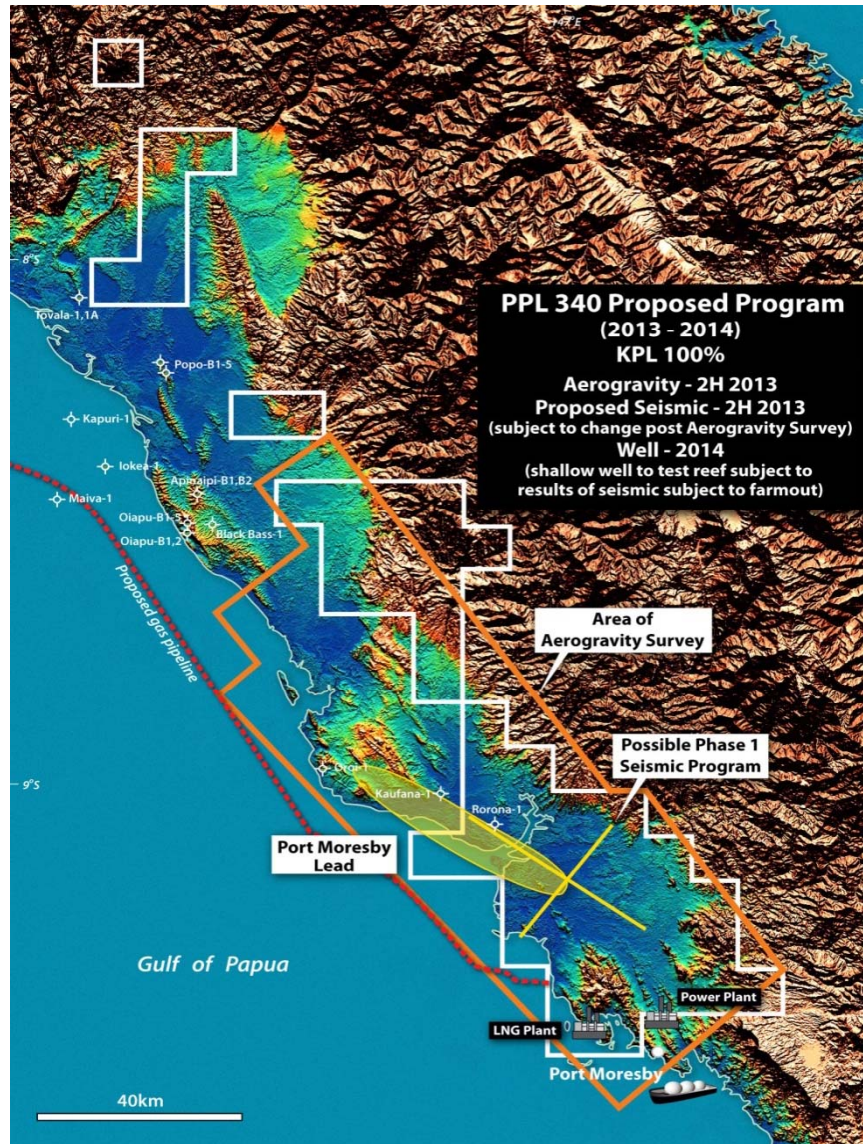




The Upoia-1 and Upoia-2 seep oils from Hepea Village have been altered by severe biodegradation. There are indications for the presence of some source and maturity related hydrocarbon biomarkers in both samples. But most of these diagnostic compounds could not be detected by the limited screening analyses of this study. The hopane biomarkers tentatively indicate that the Upoia-1 and Upoia-2 seep oils are similar and may have been generated from clay rich marine Jurassic or younger source rocks containing terrestrial organic matter.



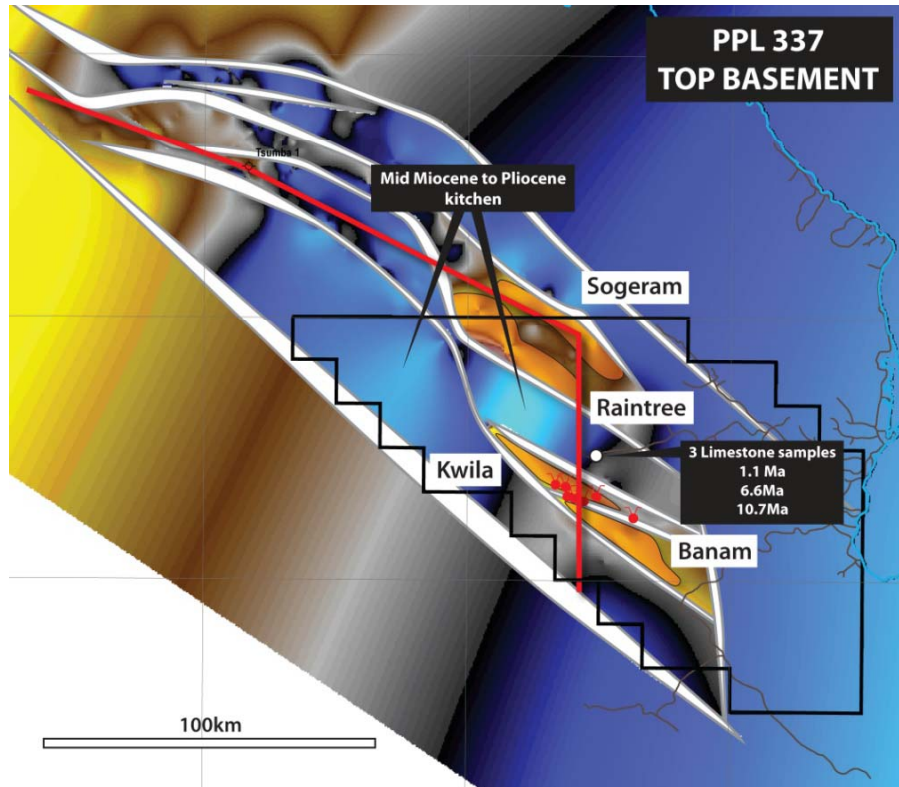




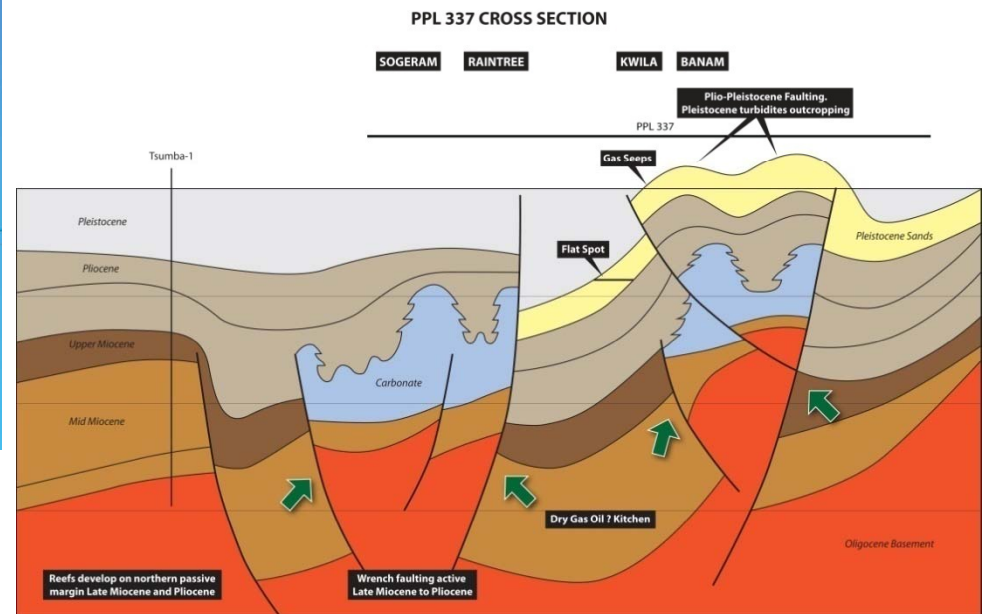
- Located in the east of PNG, close to Port Moresby.
- Untested play type, but late Miocene to Pliocene reefs evident on nearby seismic
- Target is dry gas for power generation into Port Moresby.
- Recently farmed out to Hunt Energy and Minerals (PNG) Limited.
- Aeromag program to commence shortly.
- To be followed by seismic and a well.



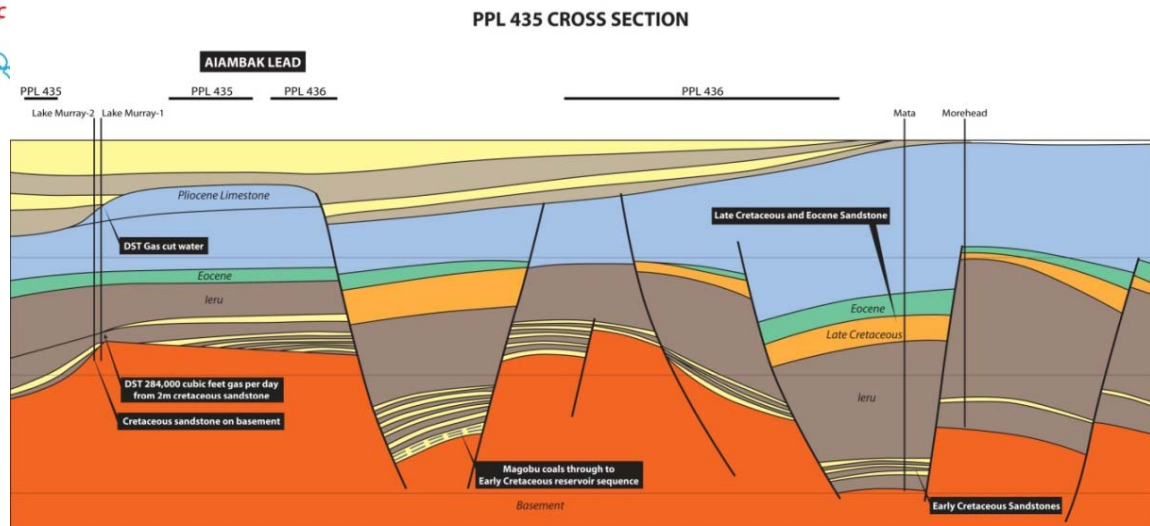
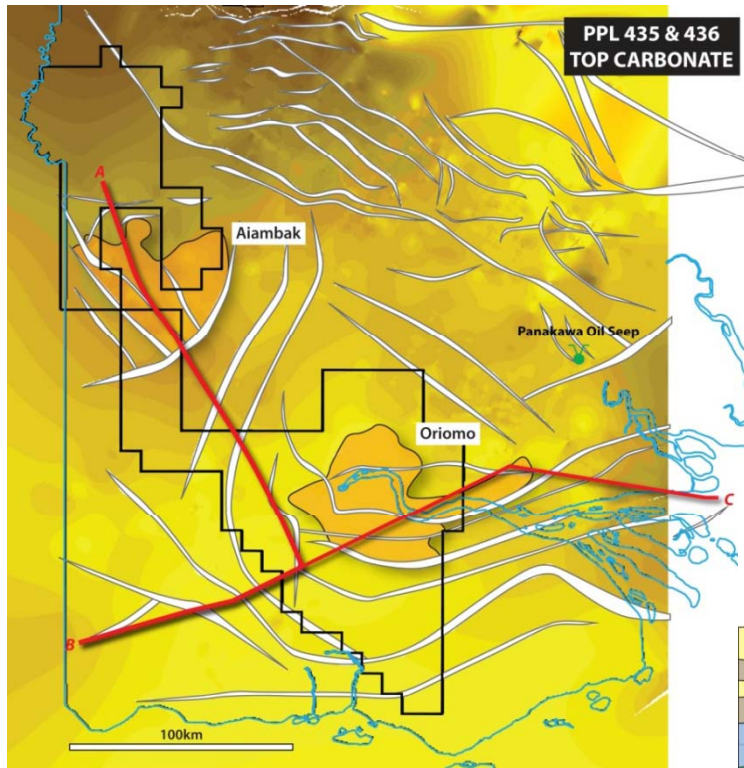




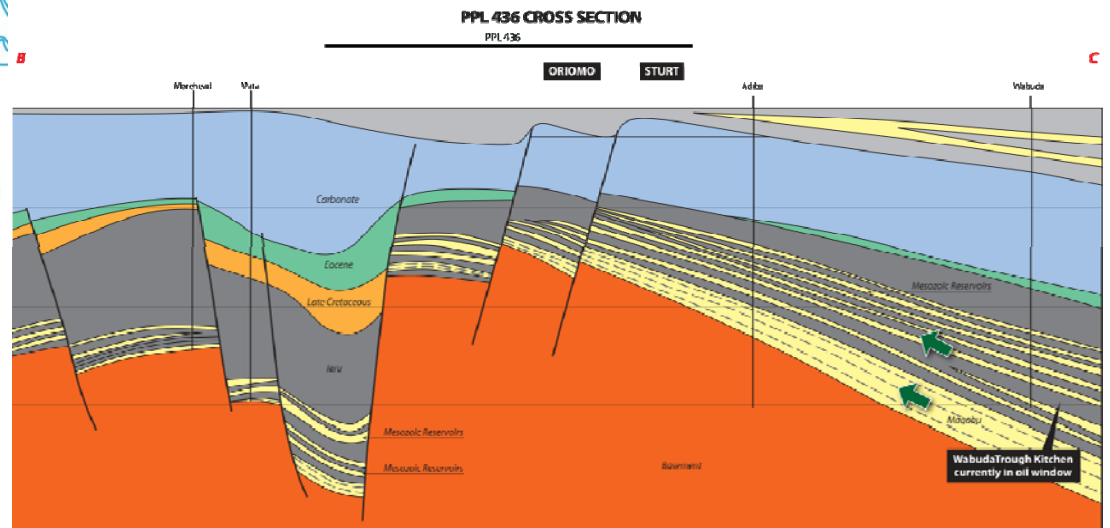
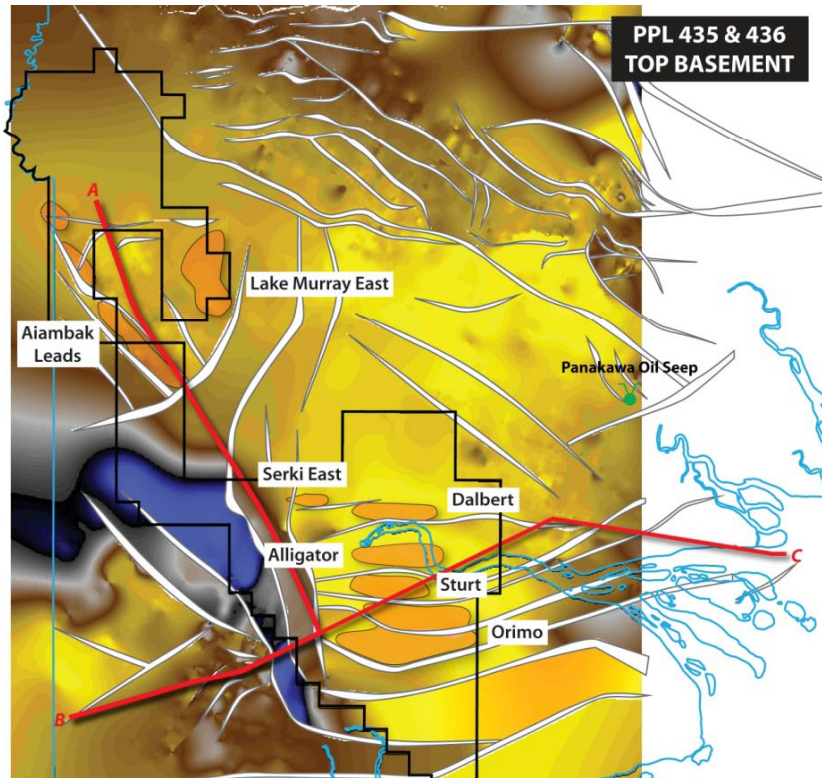
**FARMOUT IMMINENT**



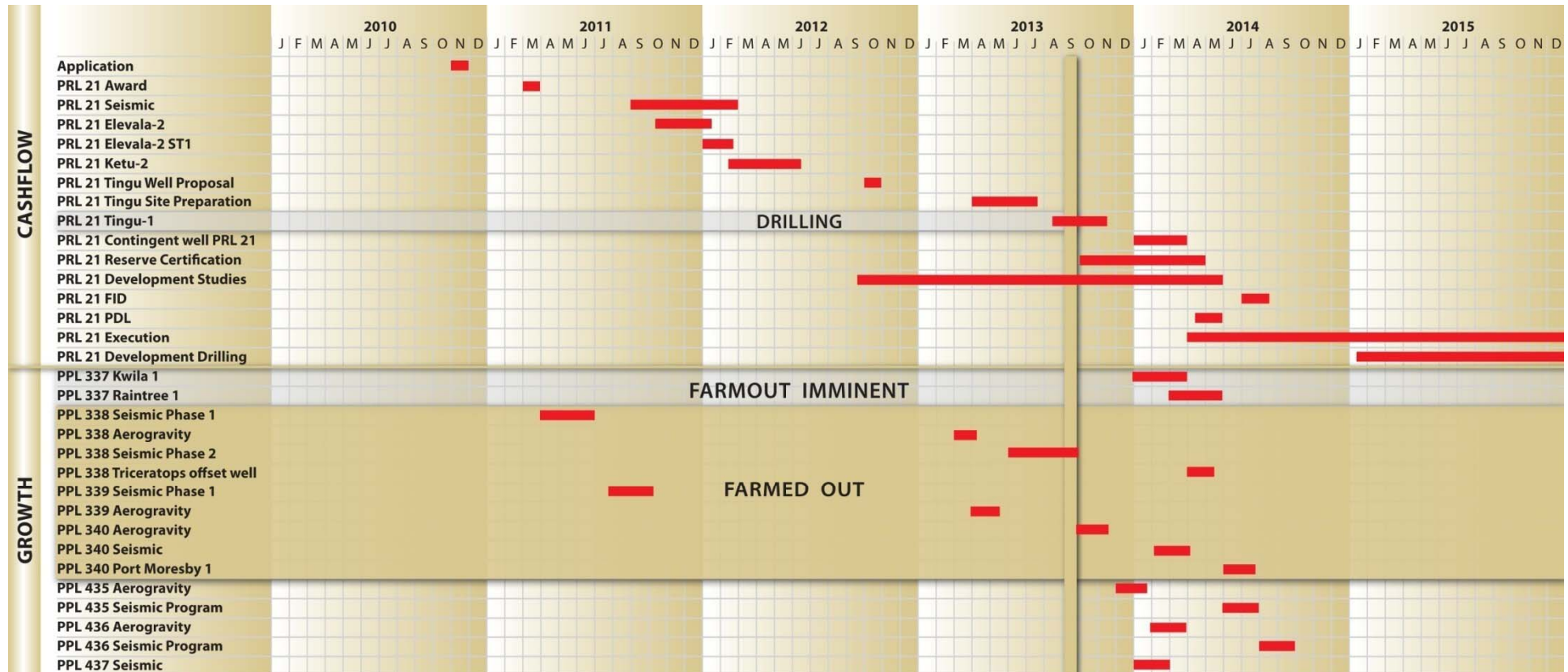














## Disclaimer

The information contained in this Investor Presentation has been prepared in good faith by Kina Petroleum Limited, and no representation or warranty, express or implied, is made as to the accuracy, correctness, completeness or adequacy of any statements, estimates, opinions or other information contained in this Investor Presentation. To the maximum extent permitted by law, Kina Petroleum Limited, its Directors, officers, employees, consultants and agents disclaim any and all liability for any loss or damage which may be suffered by any person through the use of or reliance on anything contained in or omitted from this Investor Presentation.

This Investor Presentation does not constitute financial advice. In making an investment decision investors should rely on their own examination of the information and consult with their own legal, tax, business, financial and other professional advisers in making an investment decision.

Certain information contained in this Investor Presentation, including any information on Kina Petroleum Limited's plans for future financial or operating performance and other statements that express management's expectations or estimates of future performance, may constitute forward-looking statements. Such statements are based on a number of estimates and assumptions that involve significant elements of subjective judgment and analysis which may or may not be correct, and while considered reasonable by management at the time, are subject to significant business, economic and competitive uncertainties. Kina Petroleum Limited cautions that such statements involve known or unknown risks, uncertainties and other factors that may cause the actual financial results, performance or achievements of Kina Petroleum Limited to be materially different from Kina Petroleum Limited's estimated future results, performance or achievements expressed or implied by those statements.

## Competent Person Statement

The technical information contained in this presentation is based on information compiled by Mr Richard Schroder (Managing Director) Mr Schroder has more than 30 years experience within the industry and consent to the information in the form and content in which it appears.





# Kina

PETROLEUM LIMITED

phone +61 2 8247 2500  
mobile +61 407 747 657 – Richard Schroder  
email richard.schroder@kinapetroleum.com  
address Suite 3, Level 6  
9 – 13 Young St  
Sydney NSW Australia

## Australia

PO Box R1834  
Royal Exchange, NSW 1225

## PNG

PO Box 212 WAIGANI  
National Capital District  
Papua New Guinea

website [www.kinapetroleum.com](http://www.kinapetroleum.com)

